

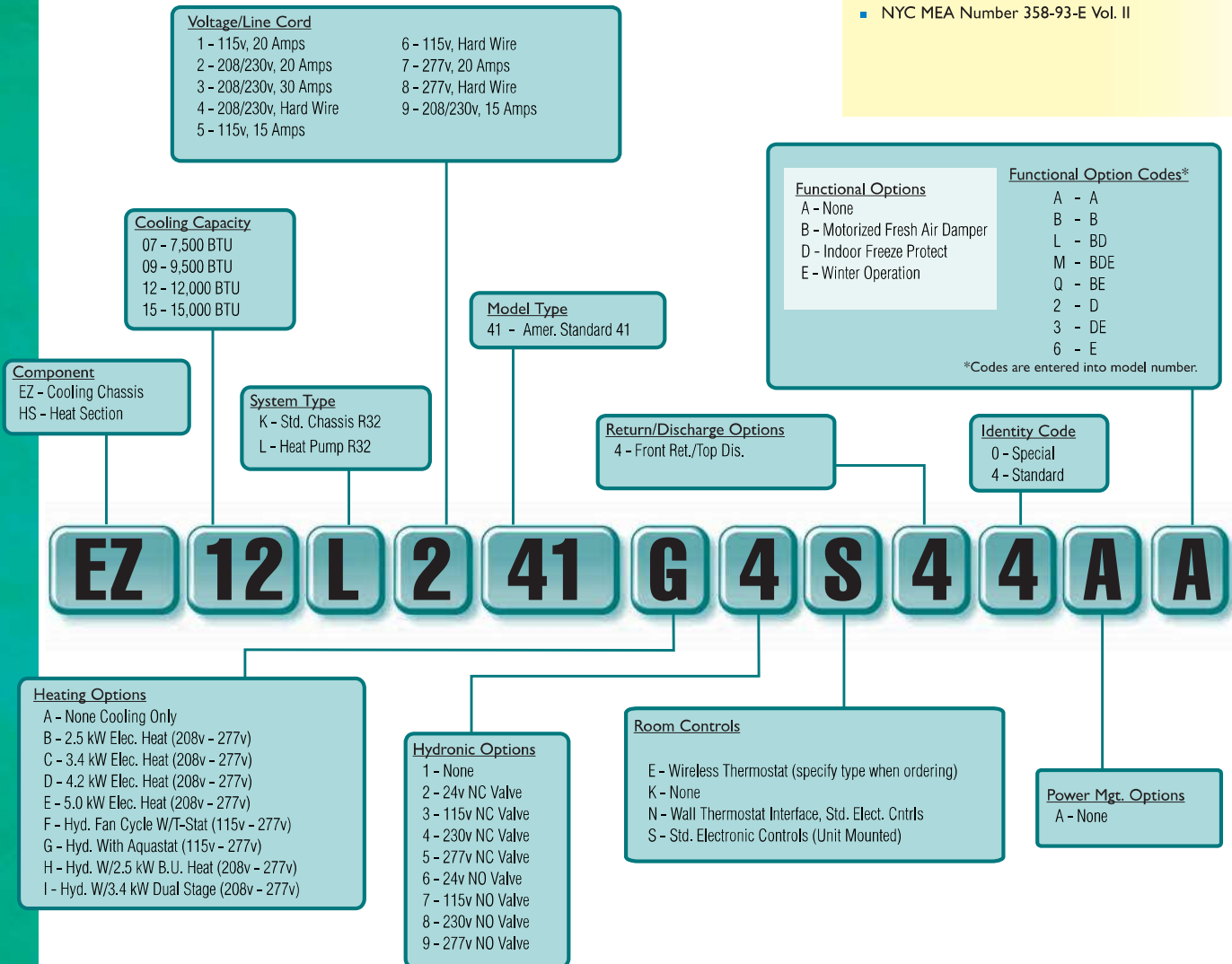
## Replacement for the Singer, Remington, and American Standard TW Series Type 41 Remotaire

Islandaire EZ Series 41 is a replacement for the Singer, Remington and American Standard models of TW Series Type 41 Remotaire units. Our commercial duty construction with heavy gauge galvanized steel and superior components create an efficient reliable unit. This design eliminates the need for any interior or exterior renovation. Use of the existing wall sleeve-cabinet and louver saves time and money, two very important factors in today's competitive environment! If the need does occur where the wall sleeve-room cabinet and/or louver needs to be replaced, we manufacture these accessories as well.



### FEATURES

- Proudly Assembled in the U.S.A.
- ETL listed products
- Superior Energy Efficiency Ratios (EERs)
- Commercial Duty Construction with Heavy Gauge Galvanized Steel
- Designed for exact replacement of existing sleeve opening
- Energy Efficient Rotary Compressors
- P.S.C. Evaporator and Condenser Motors
- High-Efficiency Refrigeration Coils Used to Provide Superior Heat Transfer
- Units Available as Cooling only, Cooling with Electric Heat, Cooling with Hydronic Heat, or Heat Pumps
- Custom Options Available
- Available with wired and wireless wall thermostats
- NYC MEA Number 358-93-E Vol. II



\*Specifications are subject to change due to ongoing product development.



## MODELS

	EZ07			EZ09			EZ12			EZ15	
VOLTS	115	208 / 230	277	115	208 / 230	277	115	208 / 230	277	208 / 230	277
BTUH COOL	7,000	7,000	7,000	9,200	9,200	9,400	11,800	12,000	11,500	14,500	14,500
AMPS	6.48	3.58 / 3.24	2.69	8.87	4.86 / 4.39	3.77	12.22	6.08 / 5.5	4.89	8.73 / 7.89	6.62
WATTS COOL	745	745	745	1,020	1,010	1,045	1,405	1,265	1,355	1,815	1,835
EER	9.41	9.41	9.41	9	9.1	9	8.4	9.5	8.5	8	7.9
CFM HIGH	400	400	400	400	400	400	420	420	420	500	500
CFM LOW	260	260	260	260	260	260	350	350	350	400	400
BTUH HEATING	6,800	6,800	6,800	9,000	8,800	9,000	11,500	11,000	11,500	13,500	13,500
WATTS HEATING	710	710	710	975	955	975	1,295	1,150	1,205	1,520	1,520
C.O.P.	2.8	2.8	2.8	2.7	2.7	2.7	2.6	2.8	2.8	2.6	2.6
WEIGHT (LBS)	105	105	105	110	110	110	115	115	115	120	120

\* CFM values are dry coil (not in cooling mode).

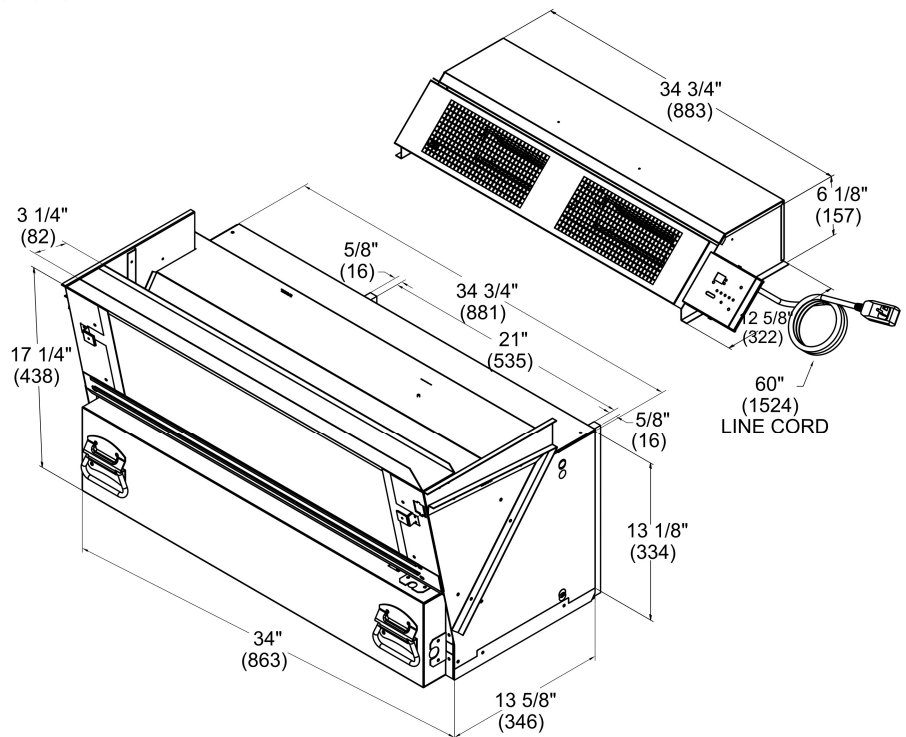
Heating Option	Voltage (1)	Wattage	BTU/h	Amps (2)
B & H	208	2,045	7,000	9.83
	230	2,500	8,500	10.87
	277	2,500	8,500	9.03
C & I	208	2,780	9,500	13.37
	230	3,400	11,600	14.78
	277	3,400	11,600	12.27
D	208	3,435	11,700	16.51
	230	4,200	14,300	18.26
	277	4,200	14,300	15.16
E	208	4,090	14,000	19.66
	230	5,000	17,100	21.74
	277	5,000	17,100	18.05

(1) Voltage is Single Phase, Alternating Current and R.M.S.

(2) Amp values are for heating element only.

Line Voltage	Maximum Amperage	Wall Socket Configuration	Receptacle Number	Electrical Heat Options
115	12		NEMA 5-15R	1.3
115	16		NEMA 5-20R	1.7
208/230	12		NEMA 6-15R	2.5
208/230	16		NEMA 6-20R	3.6
208/230	24		NEMA 6-30R	4.2 - 5.0
277	16		NEMA 7-20R	2.5 - 4.2
277	24		NEMA 7-30R	5.0

Where applicable, cooling capacities are specified at conditions of 95 °F DB/75 °F WB (35 °C DB/24 °C WB) outdoor and 80 °F DB/67 °F WB (27 °C DB/19 °C WB) indoor and heating capacities are specified at conditions of 47 °F DB/43 °F WB (8 °C DB/6 °C WB) outdoor and 70 °F DB/60 °F WB (21 °C DB/16 °C WB) indoor in accordance with AHRI 310/380 and CSA C744 standards. Wattage, Amperage, EER, and COP listings include compressor, evaporator motor and condenser fan motor. The above ratings are a typical heat pump style unit.

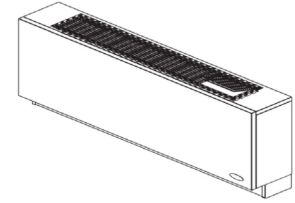


# EZ SERIES 41

## Unit Accessories

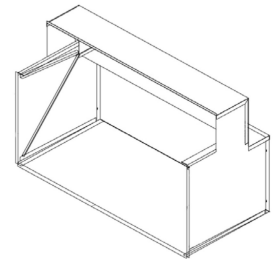
### ENCLOSURES

PART NUMBER	DESCRIPTION	APPROX WT.	DIMENSIONS		
			DEPTH	WIDTH	HEIGHT
Consult Factory	EZ41 Room enclosures are available in varying depths, in 1" increments. Custom colors and sizes are available (consult factory).	40 lbs.	various	47-3/4"	24"



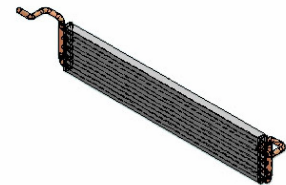
### PANELS/WALL SLEEVES

PART NUMBER	DESCRIPTION	APPROX WT.	DIMENSIONS		
			DEPTH	WIDTH	HEIGHT
2400004	EZ41 Panel/Curtain/Window/Block Wall Sleeves are available in varying depths, in 1" increments, from 13-3/4" and greater.	34 lbs.	various	36-3/8"	15"



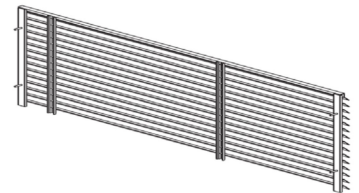
### HYDRONIC OPTIONS

PART NUMBER	DESCRIPTION	APPROX WT.	DIMENSIONS		
			DEPTH	WIDTH	HEIGHT
6030038	Hydronic Coil Assembly, opposite end, headered, standard	10 lbs.	1-5/64"	31-5/8"	6-1/4"
6030262	Hydronic Coil Assembly, same end, headered, standard	10 lbs.	1-5/64"	31-5/8"	6-1/4"



### LOUVERS

PART NUMBER	DESCRIPTION	APPROX WT.	DIMENSIONS		
			DEPTH	WIDTH	HEIGHT
6070037	EZ41 American Standard Style (original sleeve only)	10 lbs.	1-7/64" (approx.)	39"	16"
6070090	EZ41 Islandaire Sleeve Louver (Islandaire only)	10 lbs.	1" (approx.)	36-3/16"	14-3/4"



### THERMOSTATS

PART NUMBER	DESCRIPTION	APPROX WT.	FEATURES		
			CONNECTION	STAGE	DISPLAY
6041206	Islandaire Non-Programmable, Two Fan Speed	1.0 lbs.	Wireless	Single	Horizontal
6041210	Islandaire Programmable, Two Fan Speed	1.0 lbs.	Wireless	Single	Horizontal
6041228	Islandaire Programmable (7 Day/5-1-1 Day/Non-Programmable), Two Fan Speed	1.0 lbs.	Wired	Single	Horizontal
6041373	Islandaire Wireless, WiFi Programmable	1.0 lbs.	Wireless	Single	Horizontal



### OTHER OPTIONS

PART NUMBER	DESCRIPTION	APPROX WT.	FEATURES
Consult Factory	Motorized Valves (consult factory)	3 lbs.	-
6080000	Aluminum Filter, Standard	<1 lb.	-
6090026	EZ41 Series Condenser Baffle, 1" x 14" x 2"	<1 lb.	-

Ask your salesman about  
our DR. PTAC option!\*

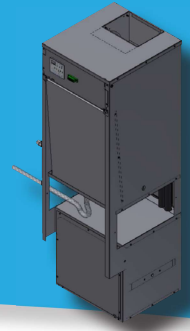


\*100% conditioned  
fresh air

## EZ Series VH Unit Available

Vertical Water Source Hybrid Heat  
Pump, Replacement For:

CGC InnKeeper/HomeKeeper



Scan for more information

500 Middle Country Road, St. James, NY 11780 • 1-800-886-2759  
e-mail: [sales@islandaire.com](mailto:sales@islandaire.com) • [www.islandaire.com](http://www.islandaire.com)  
Ph: 631-471-2900 • Fax: 631-471-2913



Locally Represented By:

