

The EZVV Inverter Heat Pump incorporates state-of-the-art inverter technology, and is designed and manufactured for new construction or the replacement of vertical terminal air conditioning units in an existing building. The technology is the culmination of years of research to develop a VTAC to clearly lead the market with the low energy consumption and low sound levels. Dramatic energy savings and sound reduction is achieved by modulating the output of the VTAC to match the cooling or heating demands of the room, eliminating costly and noisy compressor cycling. We offer our cooling chassis to operate with cooling only, or heat pump with backup electric heat, or just straight electric heat. The design standards, heavy-duty construction, and focus on indoor noise reduction has positioned our unit as the premier unit of the future. Standard warranty is a one year parts and labor including five year compressor part only warranty or a two year parts only including a five year compressor part only warranty.

ACCESSORIES:

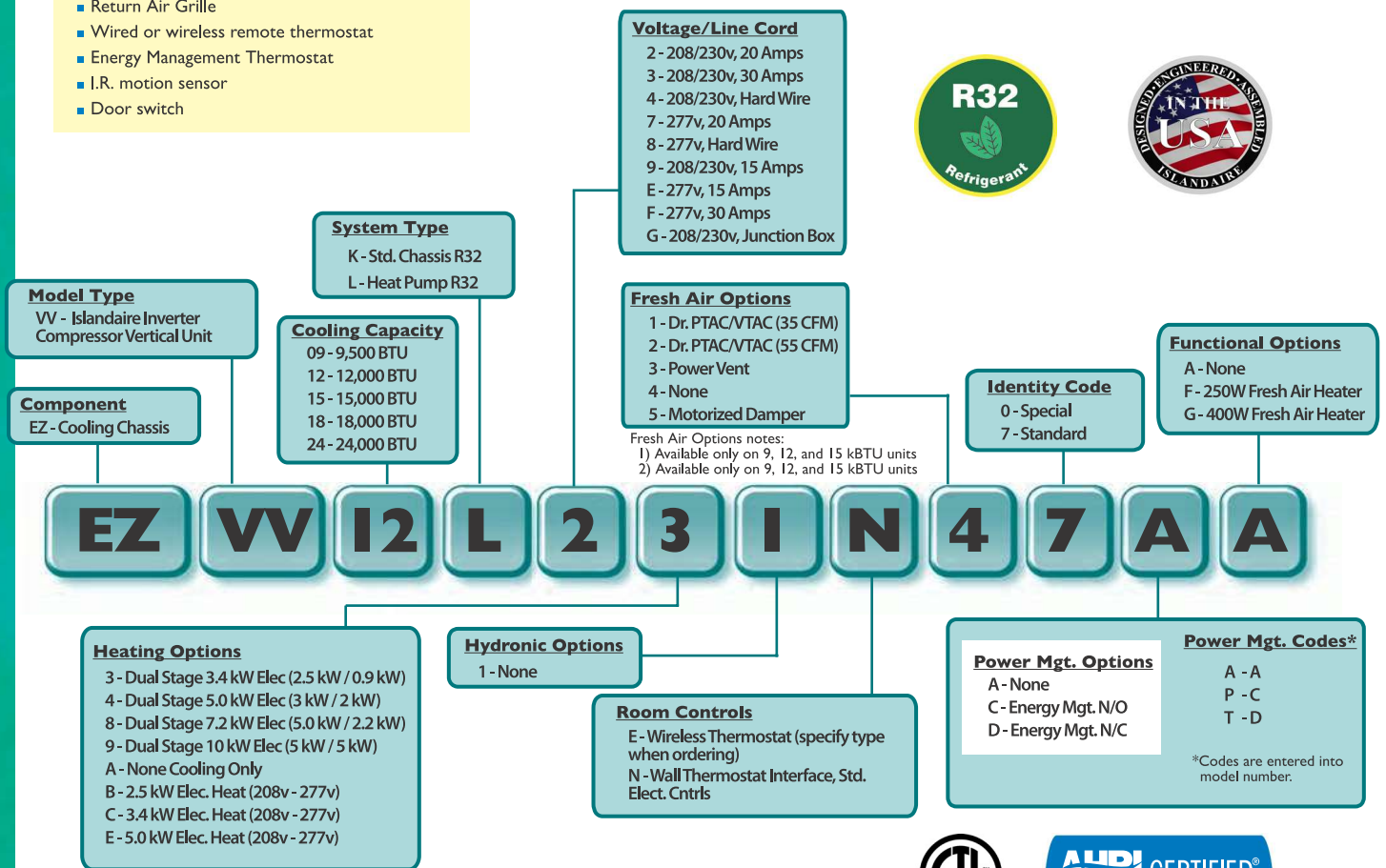
- 18 gauge, powder-coat painted wall plenum
- Air Discharge Plenum Assembly Kit
- Wall Plenum/Drain Pan Kit
- Architectural Louver
- Access Panel (interior)
- Return Air Grille
- Wired or wireless remote thermostat
- Energy Management Thermostat
- I.R. motion sensor
- Door switch

OPTIONS:

- Up to 55 CFM Continuously Conditioned make up air
- 250W or 400W fresh air heater
- Motorized fresh air damper
- Power Vent

FEATURES:

- Superior temperature control
- Dehumidification of room air
- Quiet and energy-efficient compressor
- Dual High-efficiency DC Fan Motors
- Conventional thermostat compatible for heat pump applications
- Dual-Stage electric heat element option
- Front desk control capable
- Motion sensor/door switch capable
- Compressor freeze protection
- Self-diagnosis
- Random Auto Re-start
- Compressor time delay
- Room side freeze protection
- Power service disconnect
- Washable air filter



*Specifications are subject to change due to ongoing product development.



EZ VV SERIES

DR. VTAC is designed with heavy duty materials and with a focus on indoor noise reduction, manufactured in accordance to ARI, UL, and AHAM standards and is ETL listed creating the premier VTAC unit of the future.

PATENTED TECHNOLOGY

The DR. VTAC system is an add on system to our standard VTAC unit that provides conditioned make up air. The DR. VTAC system provides up to 55 CFM of outdoor air 24/7 by forced fan and a cycling dehumidifier compressor based on outdoor relative humidity levels.

DR. VTAC was created to solve issues with dehumidification in rooms and to introduce fresh air due to deficiencies of oxygen levels. DR. VTAC is not only a VTAC but a Conditioned Make Up Air unit. New ASHRAE studies show that many illnesses in hotel rooms can be attributed to oxygen-deficient atmospheres. DR. VTAC solves that issue by introducing tempered conditioned make up air that satisfies both humidity level introduction and supplied oxygen.

DR. VTAC is a two-stage system. The primary unit is responsible for control of Sensible Heat that is introduced into the room via make up air temperature and thermal load of the occupants. The secondary unit is primarily a dehumidification unit that provides up to 55 CFM of outside fresh air into the room. The correction of the Sensible Temperature comes from the main VTAC unit, which provides additional dehumidification with temperate correction. Overall unit efficiency over standard VTACs is approximately 3% improvement. The compressor/dehumidification process is controlled by a humidistat (factory set at 50% RH) which is monitoring the outdoor relative humidity level and is adjustable by a qualified service tech. When the outdoor humidity level rises above 50% RH, the compressor and dehumidification process starts. Below 50% RH, compressor operation and dehumidification is stopped, however, fan operation continues to provide up to 55 CFM of outdoor air into the space.

The dehumidification system has a temperature switch that monitors both the refrigeration and the outdoor air temperatures. If the outdoor air temperature falls below 38 °F, the compressor is disabled with fan operation continuing to provide outdoor air into the space. All dehumidifier controls and safeties are automatically reset. An optional air tempering heater is available for the fresh air system for applications where operation in cold winter climates is required. Condensate from the dehumidifier drains into the VTAC drain pan, where it is also slung onto the condenser coil for re-evaporation outside when the A/C is running. Excess condensate is either drained to the outside through the louver or is piped to a drainage system.

Key benefits include:

1. Lower installation/renovation costs than a typical Dedicated Outdoor Air System (DOAS).
2. Decreased inconvenience to customer due to construction/installation of a DOAS system.
3. More humidity control in a room over use of a simple VTAC vent or power vent system.
4. Allows fresh make up air to travel entirely across sleeping and living area of a room, exiting through a duct or under the door.

LEED Points Achieved:

1. Energy Efficient Design and compliance with ASHRAE 62.1 and ASHRAE 90.1
2. Indoor Environmental Quality with improved IAQ through make up air.
3. Innovation in design through the use of a "Make Up Air VTAC".
4. Regional design through the use of Dr. VTAC in high humidity climates.
5. Diverting Construction Debris through the use of re-usable containers.
6. Recycling/Reusing Dr. VTAC in secondary market where the "first costs" are prohibitive to owners.

Problem Solving Benefits of DR. VTAC:

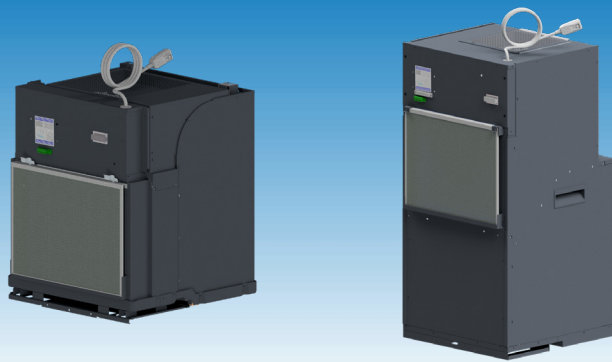
- 100% Continuously Conditioned Make up Air
- Reduced Microbial Growth
- Mildew Control
- Odor Reduction
- Solves Indoor Air Quality Issues

DR. VTAC SPECIFICATIONS	
COMPRESSOR (AMPS)	1.02
COMPRESSOR (WATTS)	225
FAN (AMPS)	0.11
DEHUMIDIFICATION @60%RH (LITERS/DAY)	7.9
DEHUMIDIFICATION @82%RH (LITERS/DAY)	17.02
HEATER (WATTS)	250/400
HEATER (AMPS)	1.1/1.7
CONTROL TYPE	Automatic

Dehumidifier Capabilities (AHAM Humidity/Temperature Conditions):		
Outdoor %RH	Outdoor Temp (°F)	H2O Removal (L/Day)
60	80	7.9
60	90	7.8
62	84	9.6
70	81	11.18
85	90	14.4
82	82	17.02

*Specifications are subject to change due to ongoing product development.

500 Middle Country Road, St. James, NY 11780 • 1-800-886-2759
 e-mail: sales@islandaire.com • www.islandaire.com
 Ph: 631-471-2900 • Fax: 631-471-2913



EZV SERIES

	EZ09		EZ12		EZ15		EZ18		EZ24	
VOLTS	208 / 230	277	208 / 230	277	208 / 230	277	208 / 230	277	208 / 230	277
BTUH COOL	9,600 / 9,600	9,600	12,600 / 12,600	12,600	15,000 / 15,000	15,000	18,300 / 18,300	18,300	22,000 / 22,000	22,000
CAPACITY RANGE	5,700-10,100	5,700-10,100	5,700-13,000	5,700-13,000	7,400-15,800	7,400-15,800	8,600-18,900	8,600-18,900	10,300-22,500	10,300-22,500
AMPS COOL	4.40 / 4.00	3.14	5.40 / 4.90	3.97	7.40 / 6.70	5.22	9.20 / 8.30	6.82	11.60 / 10.50	8.66
WATTS COOL	870 / 870	870	1,100 / 1,100	1,100	1,445 / 1,445	1,445	1,890 / 1,890	1,890	2,400 / 2,400	2,400
EER2	11.0 / 11.0	11.0	11.1 / 11.1	11.1	10.4 / 10.4	10.4	9.7 / 9.7	9.7	9.2 / 9.2	9.2
SEER2	13.8 / 13.8	13.8	14.4 / 14.4	14.4	13.7 / 13.7	13.7	12.8 / 12.8	12.8	12.8 / 12.8	12.8
CFM HIGH (SP 0.1")	465 / 465	465	465 / 465	465	465 / 465	465	565 / 565	565	700 / 700	700
CFM LOW (SP 0.1")	305 / 305	305	305 / 305	305	390 / 390	390	525 / 525	525	610 / 610	610
BTUH HEAT	9,800 / 9,800	9,800	12,300 / 12,300	12,300	14,300 / 14,300	14,300	18,000 / 18,000	18,000	20,000 / 20,000	20,000
CAPACITY RANGE	5,900-10,500	5,900-10,500	5,900-12,800	5,900-12,800	7,300-15,300	7,300-15,300	11,000-18,700	11,000-18,700	11,000-20,900	11,000-20,900
AMPS HEAT	4.00 / 3.60	2.90	5.50 / 5.00	4.03	6.70 / 6.10	4.73	8.00 / 7.20	5.90	9.20 / 8.30	6.81
WATTS HEAT	810 / 810	810	1,115 / 1,115	1,115	1,310 / 1,310	1,310	1,640 / 1,640	1,640	1,885 / 1,885	1,885
C.O.P.	3.3 / 3.3	3.3	3.2 / 3.2	3.2	2.7 / 2.7	2.7	3.2 / 3.2	3.2	3.1 / 3.1	3.1
HSPF2 (IV)	6.6 / 6.6	6.6	6.5 / 6.5	6.5	6.4 / 6.4	6.4	7.1 / 7.1	7.1	7.1 / 7.1	7.1
HSPF2 (V)	5.4 / 5.4	5.4	5.3 / 5.3	5.3	5.2 / 5.2	5.2	5.6 / 5.6	5.6	5.5 / 5.5	5.5
INDOOR NOISE (dba) Cooling	55/47/45	55/47/45	55/49/46	55/49/46	55/49/46	55/49/46	55/55/54	55/55/54	55/55/54	55/55/54
OUTDOOR NOISE (dba) Cooling	62/59	62/59	64/60	64/60	64/62	64/62	64/62	64/62	64/62	64/62
SHIPPING WT.	128	128	128	128	128	128	207	207	207	207

Heating Option	Voltage ⁽¹⁾	Wattage	BTU/h	Amps ⁽²⁾
3	208	2,780	9,500	13.37
	230	3,400	11,600	14.78
	277	3,600	12,300	13.00
4	208	4,090	14,000	19.66
	230	5,000	17,100	21.74
	277	5,000	17,100	18.05
8	208	5,890	20,100	28.31
	230	7,200	24,600	31.30
	277	10,445	35,600	37.70
9	208	8,180	27,900	39.32
	230	10,000	34,100	43.48
	277	14,505	49,500	52.36
B	208	2,045	7,000	9.83
	230	2,500	8,500	10.87
	277	2,500	8,500	9.03
C	208	2,780	9,500	13.37
	230	3,400	11,600	14.78
	277	3,600	12,300	13.00
E	208	4,090	14,000	19.66
	230	5,000	17,100	21.74
	277	5,000	17,100	18.05

Where applicable, cooling capacities are specified at conditions of 95 °F DB/75 °F WB (35 °C DB/24 °C WB) outdoor and 80 °F DB/67 °F WB (27 °C DB/19 °C WB) indoor and heating capacities are specified at conditions of 47 °F DB/43 °F WB (8 °C DB/6 °C WB) outdoor and 70 °F DB/60 °F WB (21 °C DB/16 °C WB) indoor in accordance with AHRI 310/380 and CSA C744 standards. Wattage, Amperage, EER, and COP listings include compressor, evaporator motor and condenser fan motor. The above ratings are a typical heat pump style unit.

Line Voltage	Maximum Amperage	Wall Socket Configuration	Receptacle Number	Electrical Heat Options
208/230	12		NEMA 6-15R	2.5
208/230	16		NEMA 6-20R	3.4
208/230	24		NEMA 6-30R	4.2 - 5.0
277	16		NEMA 7-20R	2.5 - 4.2
277	24		NEMA 7-30R	5.0

⁽¹⁾ Voltage is Single Phase, Alternating Current and R.M.S.
⁽²⁾ Amp values are for heating element only.

*Specifications are subject to change due to ongoing product development.



500 Middle Country Road, St. James, NY 11780 • 1-800-886-2759
 e-mail: sales@islandaire.com • www.islandaire.com
 Ph: 631-471-2900 • Fax: 631-471-2913

EZVV SERIES

EZVV Inverter: The Benefits of Inverter Technology

The EZVV Series Inverter Heat Pump incorporates state-of-the-art inverter technology not found in any other VTAC. The technology is the culmination of years of research to develop a VTAC to clearly lead the market with the lowest energy consumption, most consistent dehumidification, best conditioned air and the lowest sound levels.

Although published EER's will be similar to other VTACs, based on laboratory testing simulating real-world installations, up to a 30% reduction in energy consumption can be expected with the Islandaire EZVV Series VTAC when compared to other VTACs! Dramatic energy savings and sound reduction is achieved by modulating the output of the VTAC to match the cooling or heating demands of the room, eliminating costly and noisy compressor cycling.

Non-Inverter VTACS

Run the compressor at full RPM or zero RPM (on or off). The on/off compressor cycling in part-load conditions wastes substantial amounts of electric power.

EZVV Inverter VTAC

Slow the compressor RPM to match the part-load cooling or heating power required. A substantial reduction in power consumption occurs.

Incredibly Quiet

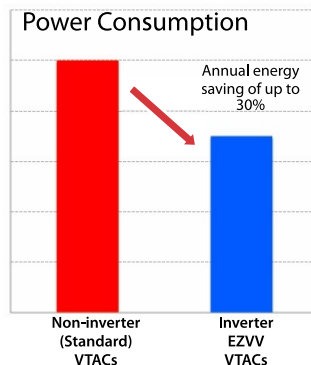
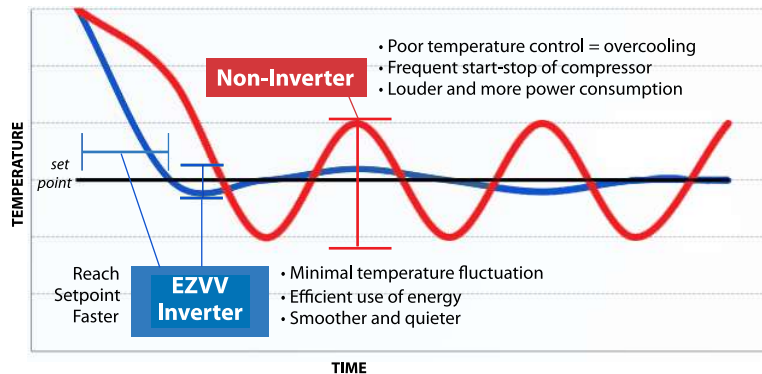
- Inverter compressor, condenser fan and evaporator fan slow to match cooling and heating demand of room, reducing operating sound levels.
- Elimination of compressor start/stop means the room is much quieter in part-load conditions

Highest Efficiency

In real-world conditions, the modulating inverter chassis means inefficient start/stop of the compressor is eliminated.

Consistent Dehumidification

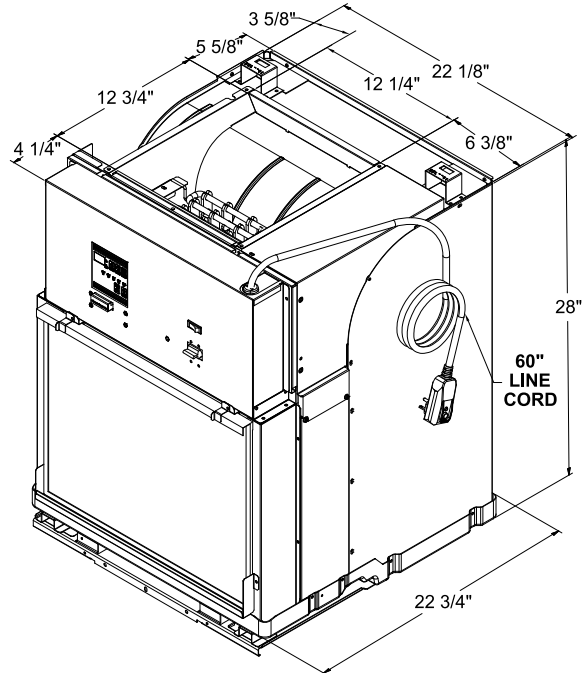
Modulating inverter technology ensures a cold condensing evaporator coil in part-load to keep comfortable humidity levels, eliminating clamminess in humid conditions.



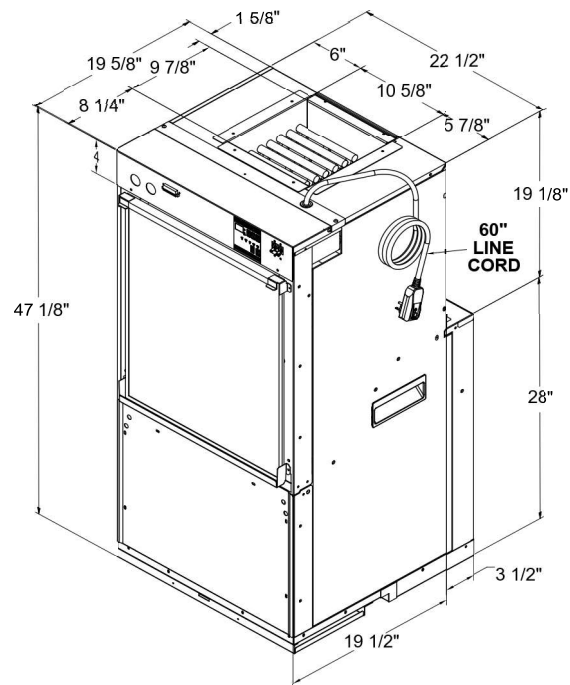
*Specifications are subject to change due to ongoing product development.

500 Middle Country Road, St. James, NY 11780 • 1-800-886-2759
e-mail: sales@islandaire.com • www.islandaire.com
Ph: 631-471-2900 • Fax: 631-471-2913

9k thru 15k Unit Dimensions:

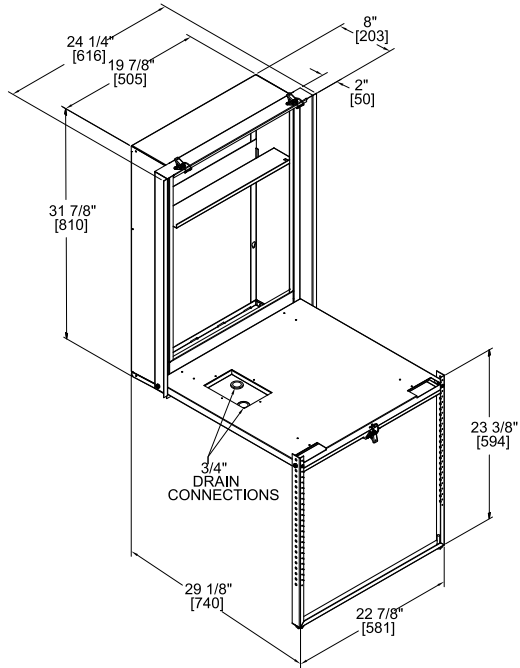


18k and 24k Unit Dimensions:

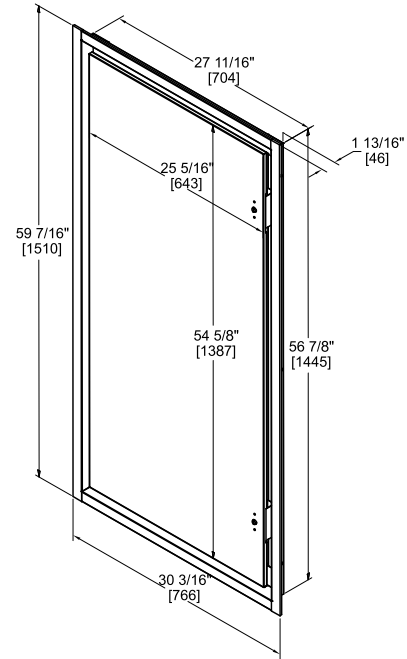


*Specifications are subject to change due to ongoing product development.

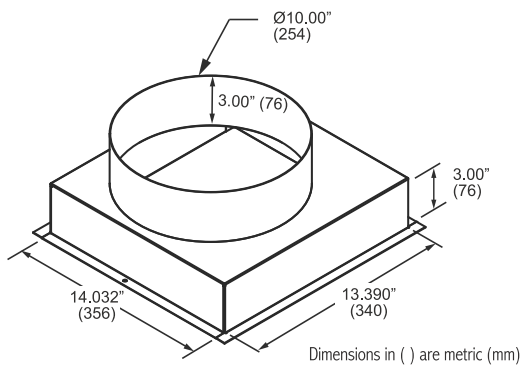
Wall Plenum Assembly Dimensions (All Units):



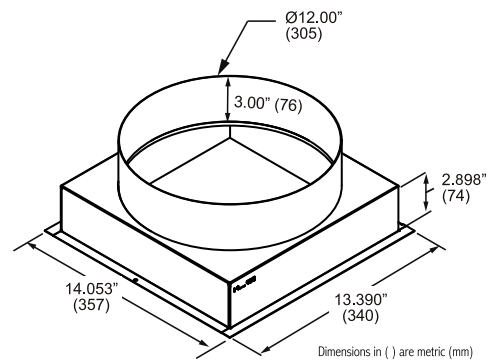
Hinged Access Panel Assembly Dimensions (All Units):



9k thru 15k Unit Discharge Plenum Dimensions:



18k and 24k Unit Discharge Plenum Dimensions:



*Specifications are subject to change due to ongoing product development.

PLENUMS/ADAPTERS

PART NUMBER	DESCRIPTION	APPROX WT.	DIMENSIONS		
			DEPTH	WIDTH	HEIGHT
4091635	EZVV Wall Plenum Assembly*	54 lbs.	6.000"	19.875"	32.000"
4091651	EZVV Wall Plenum Assembly*	56 lbs.	8.000"	19.875"	32.000"
4091652	EZVV Wall Plenum Assembly*	58 lbs.	10.000"	19.875"	32.000"
4091653	EZVV Wall Plenum Assembly*	60 lbs.	12.000"	19.875"	32.000"
4091654	EZVV Wall Plenum Assembly*	63 lbs.	15.000"	19.875"	32.000"
2501231	EZVV Plenum Ext. , 1.125, Custom	9 lbs.	1.125"	19.875"	32.000"

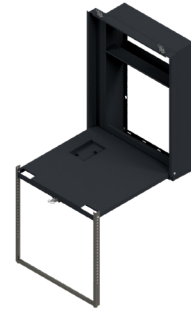
* To use new style EZVV Wall Plenum Assembly with an existing (old style) wall plenum, order part number 4091649, which includes plenum adapter and base pan portions only.

Friedrich replacement units requires below wall plenum adapter:

4091618	EZVV Friedrich VRP, Plenum Adapter	50 lbs.	5.840"	22.875"	31.334"
---------	------------------------------------	---------	--------	---------	---------

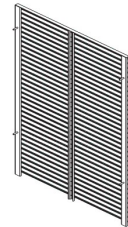
First Company replacement units requires below wall plenum adapter:

4092537	EZVV First Company Plenum Adapter	48 lbs.	7.577"	22.875"	40.875"
---------	-----------------------------------	---------	--------	---------	---------



LOUVERS

PART NUMBER	DESCRIPTION	APPROX WT.	DIMENSIONS		
			DEPTH	WIDTH	HEIGHT
6070431	EZVV Architectural Louver, External, Std.	10 lbs.	1.063"	19.875"	31.750"
6070462	EZVV Wall Return Air Grille	10 lbs.	0.3125"	20.000"	20.000"
6070548	EZVV Stamped Louver	10 lbs.	1.063"	19.875"	31.750"
6070579	EZVV Louver, Custom	5 lbs.	1.125"	19.625"	31.188"



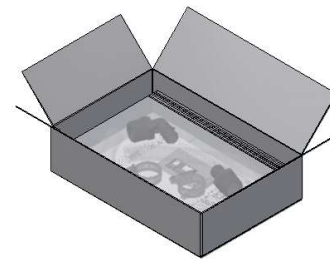
ACCESS PANELS

PART NUMBER	DESCRIPTION	APPROX WT.	DIMENSIONS		
			DEPTH	WIDTH	HEIGHT
4086087-08	EZVV Access Panel, Hinged, Perimeter Return	48 lbs.	1.780"	30.125"	59.410"
4084085	EZVV Access Panel Assembly, 9K-15K, w/ Return	25 lbs.	1.923"	30.125"	50.125"
4086195	EZVV Access Panel Assembly, 18K-24K, w/ Return	36 lbs.	1.923"	30.125"	62.125"
4084962	EZVV Access Panel Assembly, 9K-15K, Solid	25 lbs.	1.923"	30.125"	50.125"
4086196	EZVV Access Panel Assembly, 18K-24K, Solid	37 lbs.	1.923"	30.125"	62.125"
4084834	EZVV Access Panel Assembly, 9K-15K, Baffled, w/Return	36 lbs.	2.072"	30.125"	50.125"
4086197	EZVV Access Panel Assembly, 18K-24K, Baffled, w/Return	43 lbs.	2.072"	30.125"	62.125"



DRAIN KITS

PART NUMBER	DESCRIPTION	APPROX WT.	DIMENSIONS		
			DEPTH	WIDTH	HEIGHT
4092521	EZVV Secondary Drain Kit, Float	1 lbs.	-	-	-
4092522	EZVV Primary Drain Kit, Flex Tubing	1 lbs.	-	-	-



*Specifications are subject to change due to ongoing product development.

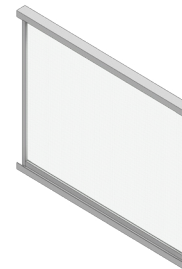
THERMOSTATS

PART NUMBER	DESCRIPTION	APPROX. WT.	FEATURES		
			CONNECTION	STAGE	DISPLAY
6041206	Islandaire Non-Programmable, 2 Fan Speed	1.0 lbs.	Wireless	Single	Horizontal
6041210	Islandaire Programmable, 2 Fan Speed	1.0 lbs.	Wireless	Single	Horizontal
6041228	Islandaire Programmable (7 Day/5-1-1 Day/ Non-Programmable), Two Fan Speed	1.0 lbs.	Wired	Single	Horizontal
6041373	Islandaire Wireless, WiFi Programmable	1.0 lbs.	Wireless	Single	Horizontal
6041374	Islandaire Wireless, WiFi (Receiver Only)	1.0 lbs.	N/A	N/A	N/A
6041375	Wet Switch Kit for 6041373 Thermostat	1.0 lbs.	N/A	N/A	N/A



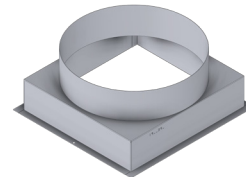
FILTERS

PART NUMBER	DESCRIPTION	APPROX. WT.	DIMENSIONS		
			DEPTH	WIDTH	HEIGHT
6080125	20x16x1 Mesh Filter, 9k to 24kBTU Units	2 lbs.	1.000"	20.000"	16.000"
6080118	20x16x1 MERV8 Filter, 9k to 24kBTU Units	2 lbs.	1.000"	20.000"	16.000"
6080123	20x16x1 MERV11 Filter, 9k to 24kBTU Units	2 lbs.	1.000"	20.000"	16.000"
6080124	20x16x1 MERV13 Filter, 9k to 24kBTU Units	2 lbs.	1.000"	20.000"	16.000"



DISCHARGE AIR PLENUMS

PART NUMBER	DESCRIPTION	APPROX. WT.	DIMENSIONS		
			DEPTH	WIDTH	HEIGHT
4091640	Air Disch. Plenum Kit, 9k to 15kBTU, 7AA Units	3 lbs.	14.032"	13.390"	6.000"
4092496	Air Disch. Plenum Kit, 18k and 24kBTU, 7AA Units	3 lbs.	14.032"	14.053"	6.000"
6120212	Tapered Reducer, 10" to 8" Round	1 lbs.	10.000"	10.000"	6.750"



LINE CORD/HARDWARE KITS

PART NUMBER	DESCRIPTION	APPROX. WT.	DIMENSIONS		
			DEPTH	WIDTH	HEIGHT
4092552	EZVV Hardwire Kit, 48", 115/277V	2 lbs.	N/A	N/A	N/A
4092539	EZVV Hardwire Kit, 48", 208/230V	2 lbs.	N/A	N/A	N/A
6160146	Line Cord, 277V, 15 Amp (6 Foot)	2 lbs.	-	-	-
6160032	Line Cord, 277V, 20 Amp (6 Foot)	2 lbs.	-	-	-
6160676	Line Cord, 277V, 30 Amp (6 Foot)	2 lbs.	-	-	-



*Specifications are subject to change due to ongoing product development.

500 Middle Country Road, St. James, NY 11780 • 1-800-886-2759
 e-mail: sales@islandaire.com • www.islandaire.com
 Ph: 631-471-2900 • Fax: 631-471-2913

Ask your salesman about our
DR. VTAC option!*



*100% conditioned
fresh air

Contact Sales for informa-
tion about our custom-sized
**PTAC/PTHP and Water Source
Heat Pump Units**



Scan for more information

500 Middle Country Road, St. James, NY 11780 • 1-800-886-2759
e-mail: sales@islandaire.com • www.islandaire.com
Ph: 631-471-2900 • Fax: 631-471-2913



Locally Represented By: